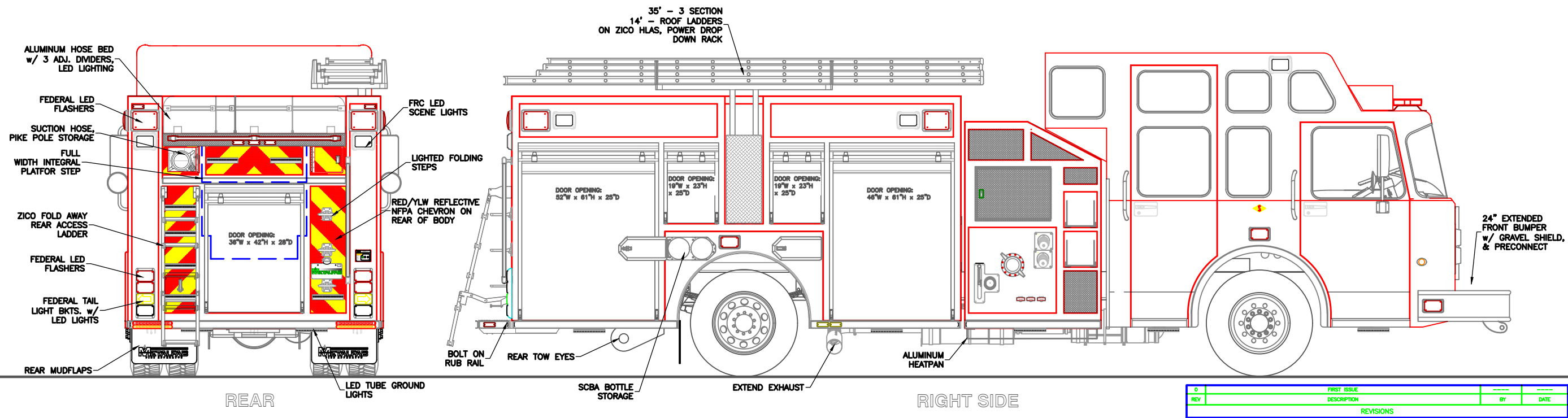
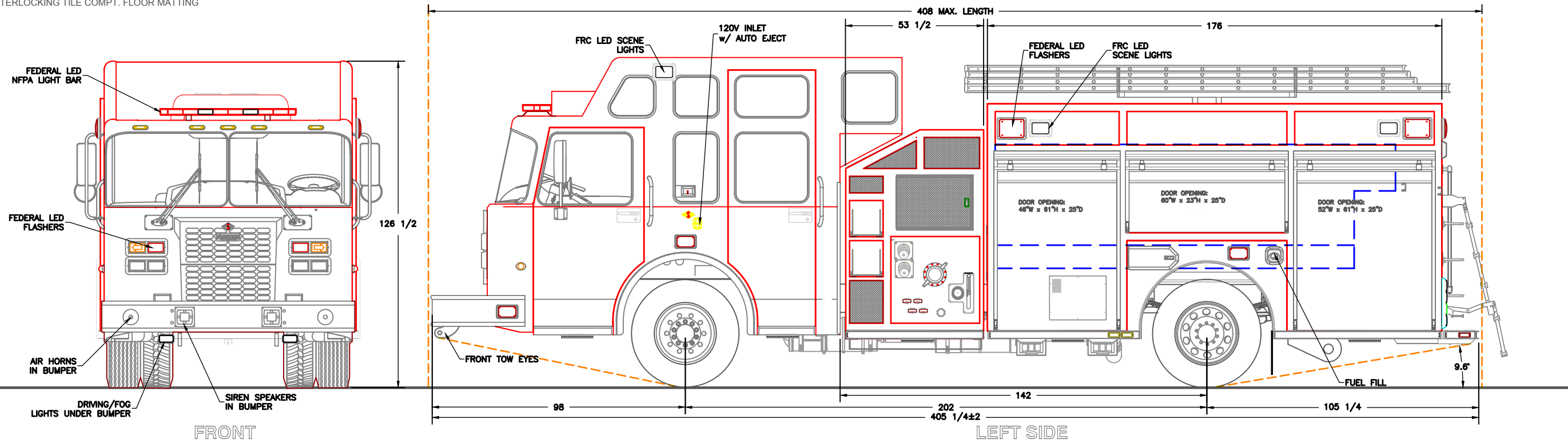


NOT SHOWN:

KUSSMAUL PUMP PLUS BATT. COND.
 MASTER BATTERY DISCONNECT SWITCH
 WELDON V-MUX ELEC. SYSTEM
 CLASS 1 ENGINE GOVERNOR
 DOOR AJAR LIGHT IN CAB
 EQUIP RACK UNSTOWED LIGHT IN CAB
 INTERLOCKING TILE COMPT. FLOOR MATTING

REFLECTIVE STRIPING
 HEATER IN PUMP HOUSE
 WILBERT NIGHTSCAN LIGHT TOWER (OPTIONAL)



CHASSIS: SPARTAN METRO-STAR EMFD 20" ROOF
 PUMP: WATEROUS CS 1050 IGPM MIDSHIP
 TANK: 835 Imp. Gal. POLYPROPYLENE
 1 - 20 Imp. Gal. FOAM CELL
 FOAM: FOAMPRO 2002

SUCTION: 1 - 6" LEFT (ELEC. GATE)
 1 - 6" RIGHT (ELEC. GATE)
 1 - 3" TANK TO PUMP
 1 - 2 1/2" LEFT
 1 - 2 1/2" RIGHT

DISCHARGES: 1 - 3" MONITOR
 2 - 2 1/2" LEFT
 2 - 2 1/2" RIGHT
 1 - 2 1/2" REAR
 1 - 2 1/2" FRONT

1 - 2" TANK FILL
 2 - 1 1/2" SPEEDLAYS

REV	DESCRIPTION	BY	DATE
0	FIRST ISSUE		
REVISIONS			
DISTRICT OF ELKFORD		TITLE: GENERAL ARRANGEMENT	
JOB No. PROPOSAL			
DRAWN BY T CULLINS			
DATE 07-05-19	DRAWING NO. FT-11212		
METALFAB LTD. 847 CENTRAL ST. CENTREVILLE NB. CANADA E7K 2E8		REV 0	

-ALL ALUMINUM CONSTRUCTION - ALL DIMENSIONS ARE IN INCHES & APPROXIMATE